

# Chapter 10

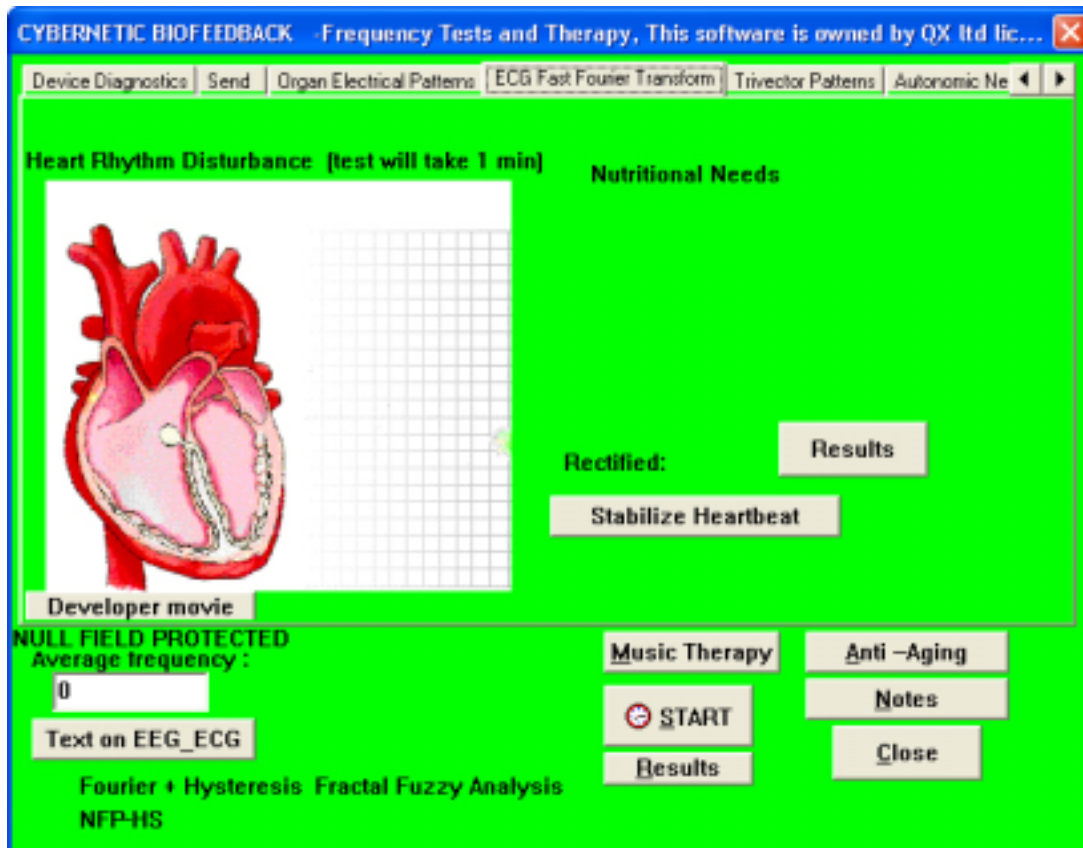
## **ACTIVATE FREQUENCY MODULATION PROGRAM**

- ◆ **Stabilize Heartbeat.....54**
- ◆ **Organ Electric Patterns.....54**
- ◆ **ECG Fast Fourier Transform.....54**
- ◆ **Trivector Patterns.....54**
- ◆ **Automatic Nerval System.....54**
  - **Sympathetic.....54**
  - **Parasympathetic.....54**
  - **Vegus Nerve Stabilization.....54**
- ◆ **Brain Wave Pattern Therapy.....55**
- ◆ **Attention Defecit.....55**
- ◆ **Stim Brain with Wave Speed.....55**
- ◆ **Conditions Affecting the Brain.....56**
- ◆ **Subspace Morphic Trans.....57**

## CHAPTER 10

# ACTIVATE FREQUENCY MODULATION PROGRAM

Figure 19 – Frequency Modulation Program



## Frequency Modulation Program

From the Test Screen:

**C Programs** (top menu bar)

**C Therapy** (drop down list)

**C Frequency Modulation Program** (along the top menu bar are several selections)

★ *Options:*

### **Stabilize Heartbeat**

**C Stabilize Heartbeat**

Seek rectification of **85** or above

**C Close**

### **Organ Electric Patterns**

**C Organ Electric Patterns**

**C Start** (this shows the organs out of balance)

**C Close**

### **ECG Fast Fourier Transform**

**C ECG Fast Fourier Transform**

**C Start** (note information in the **grey** box – **DBL C** to remove)

### **Trivector Patterns**

**C Trivector Patterns**

Add specific muscles to be treated if you like

**C Start** (note information in the **grey** box – **DBL C** to remove)

### **Autonomic Nerval System**

**C Autonomic Nerval System**

**C Start** (will test for 1 min)

Treat either **Sympathetic**, **Parasympathetic** or **Vagus Nerve Stabilization** depending on which shows up most on the **grey** information screen

## Brain Wave Pattern Therapy

**C Brain Wave Pattern Therapy**

**C Start**

**C OK** to messages, wait to complete

**C OK** to finish

Under **Pattern Type** note the value for **Normal**. All other values should be 10 or more points less than **Normal**

**C** high value item

**C Treat clicked item** (you may choose a few of the highest to work on, one at a time)

**C Start** (this allows a review of the changes)

## Yellow Box with Emotional Patterns

Should the **yellow** box appear the emotional stress will need to be cleared before doing the brain therapy.

**C Brain wave tune for emotional stress** (wait for it to finish)

★ *Options:*

## Attention Deficit, Brain Fatigue, Leap

**C Attention Deficit, Brain Fatigue, Leap** (questions are for **Attention Deficit** only)

**C Calculate/Continue**

**C Dyslexia/Dysphonia Repair** (treat if appropriate)

**C Leap Gen Learn Repair** (treat if appropriate)

## Stim Brain with Wave Speed

**C Stim Brain with Wave Speed** (this takes approx. 3 min.)

**C Close**

## Conditions Affecting the Brain

### \*Brain Wave Pattern Therapy

Adapted from the QXCI system with permission from Professor William Nelson

#### Cerebellar Disorders

Here there is a poly spike wave set at 4-6Hz with anterior maximum. This can be from demyelination of the cerebella area. There may be accompanying dizziness and inability to maintain balance. Treatment should include fatty acids and proper sarcodes.

#### Local Slow Waves

Local Slow waves are less than 8Hz and appear at only one electrode. Local Slow waves come from abscesses, migraines, hypertension, etc.

#### Amplitude Disorders

Here the overall battery of the brain is weak. This can be because of mineral, dehydration, amino acid deficiency, fatty acid deficiency, or hypo-oxygenation. This can occur in brain death, stroke, Huntingdon's chorea, brain toxicity, or metabolic disease. Anxiety or intense fear can also produce such a pattern.

#### Epileptic

Ictal patterns, hyperarrhythmia, slow spike, multifocal independent spikes, epileptic spindles all are detectable. These can occur in infants sometimes without any risk. Past 8 years, these patterns can be evidence of brain hormone deficiency, injury, or other blockage of hormonal activity.

#### General Asymmetry

Here there is a difference in the amplitude and or phase of the waves from the two sides of the head. Thalamic cortical lesions can cause lesions on one side. A skull defect can cause this pattern. Suggest cranial sacral therapy or other cranial adjustment.

#### Injury

Many traumas physical or emotional can produce certain wave forms. These forms are over synchronous for a period then non synchronous for a period. There will occur an abnormal alpha wave that prevents total relaxation. This indicated the need for the Injury homeopathic or other therapy for trauma.

#### Bilateral Synch

Here slow waves (7- 8Hz) are found on both sides of the head with exactly the same occurrence. The pattern can shift location and can be detected as trains of waves on a background of lower amplitude. They can be created by hyperventilation, drowsiness, hypoglycemia, having a disorder more in the grey matter than the white matter, structural disorders, in the mesencephalon, diencephalons, or the frontal lobe. Also treat toxins, endocrine and metabolic disease.

#### Deep Brain Asymmetry

Many conditions can affect deep parts of the brain. Limbic, thalamic, rhineencephalon and other areas can produce certain wave deformities that will echo on each channel and even effect the total trivector analysis. Alzheimer's, Parkinson's, Addison's, Wilson's other metabolic diseases can produce this pattern. Toxins such as steroids or drugs can also do the same. Vitamin and mineral deficiency such as B12, Copper, Potassium, can also result in this function. Carbon Monoxide or oxygen deficiency such as emphysema can produce the phenomena. Hypoglycaemia or liver disease must also be treated.

#### Personality Disorders

The personality engram has a signature reactive field. If there are two engrams appearing this factor can appear. There are other forms which can be detected from the QXCI. These factors will need to be treated with counseling and or NLP techniques.

## Subspace Morphic Trans

**C Subspace Morphic Trans** (you may need to scroll the top menu bar)

**C Start**

**C OK - OK** (wait for **yellow** panel)

**C Yellow Panel** (**green** screen with **black** highlighted items appears)

**C Start**

**OR**

**C** one **black** highlighted item at a time

**C Start**

**C OK** wait for treatment to complete

**C OK** (**yellow** panel appears)

**C Yellow Panel** to view results

If any **black** highlighted disturbances remain, repeat the above process.