

# Chapter 16

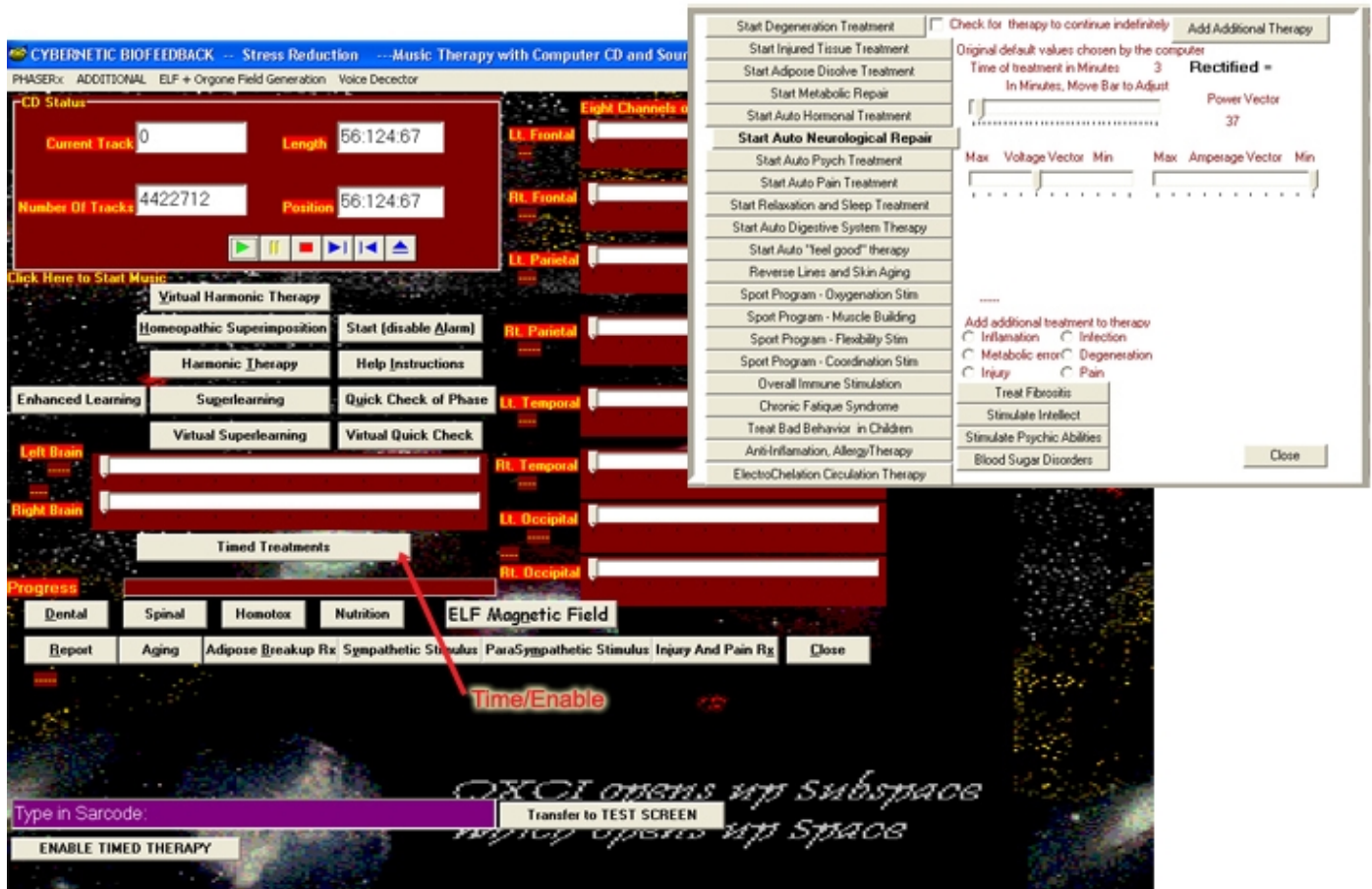
## **TIMED THERAPIES, MUSIC & SUPERLEARNING**

- ◆ **Timed Treatments.....83**
- ◆ **Superlearning.....84**
  - **Virtual Superlearning.....84**
  - **Harmonic Therapy.....84**
  - **Homeopathic Superimposition.....84**
- ◆ **Adding Others for Balancing.....85**

# CHAPTER 16

## TIMED THERAPIES, MUSIC & SUPERLEARNING

Figure 27 - Timed Therapies, Music & Superlearning



### Timed Treatments

From the Test Screen:

**C Programs** (top menu bar)

**C Timed Therapies, Music & Superlearning** (drop down list)

**C Timed Treatments**

**C Enable Timed Therapy**

**C the unconscious choice (highlighted).** This **starts** the therapy.

★ *Option:*

**C** additional therapies as you choose, selecting the:  
**Time** (min.),  
**Voltage Vector** (max.) and  
**Amperage Vector** (max.)

You can also choose:

**check for therapy to continue indefinitely.**

Repeat each choice until **Rectified** is **85** or above

**C Close**

## Superlearning

From the Test Screen:

**C Programs** (top menu bar)

**C Timed Therapies, Music & Superlearning** (drop down list)

**C** either **Superlearning** or **Enhanced Learning** - starts 1 min. treatment

**C** appropriate selections

**Set Time**

**C Start Superlearning**

★ *Options:*

**C Virtual Superlearning** instead of **Timed Therapies, Music** etc. will start a 20 min. treatment.

OR

**C Harmonic Therapy** or **Virtual Harmonic** instead of **Timed Therapies, Music** etc. will start a long treatment balancing the left and right hemispheres of the brain. A small **red** box near the bottom of the panel gives **Progress** in percentage.

**C Homeopathic Superimposition** (to add a remedy to the treatment)

★ *Option:*

## **Adding Others for Balancing**

Adding others for Balancing (such as family members)

**C Phaser X** (on top menu bar)

**C Add More Patients to Subspace**

Type in their names on the right panel.

**C Close Timed Therapies**

**C Phase X** (top menu bar)

**C Hide Patient List** (as an option, this will remove the list from the screen)