

Chapter 21

RISKS PROFILE

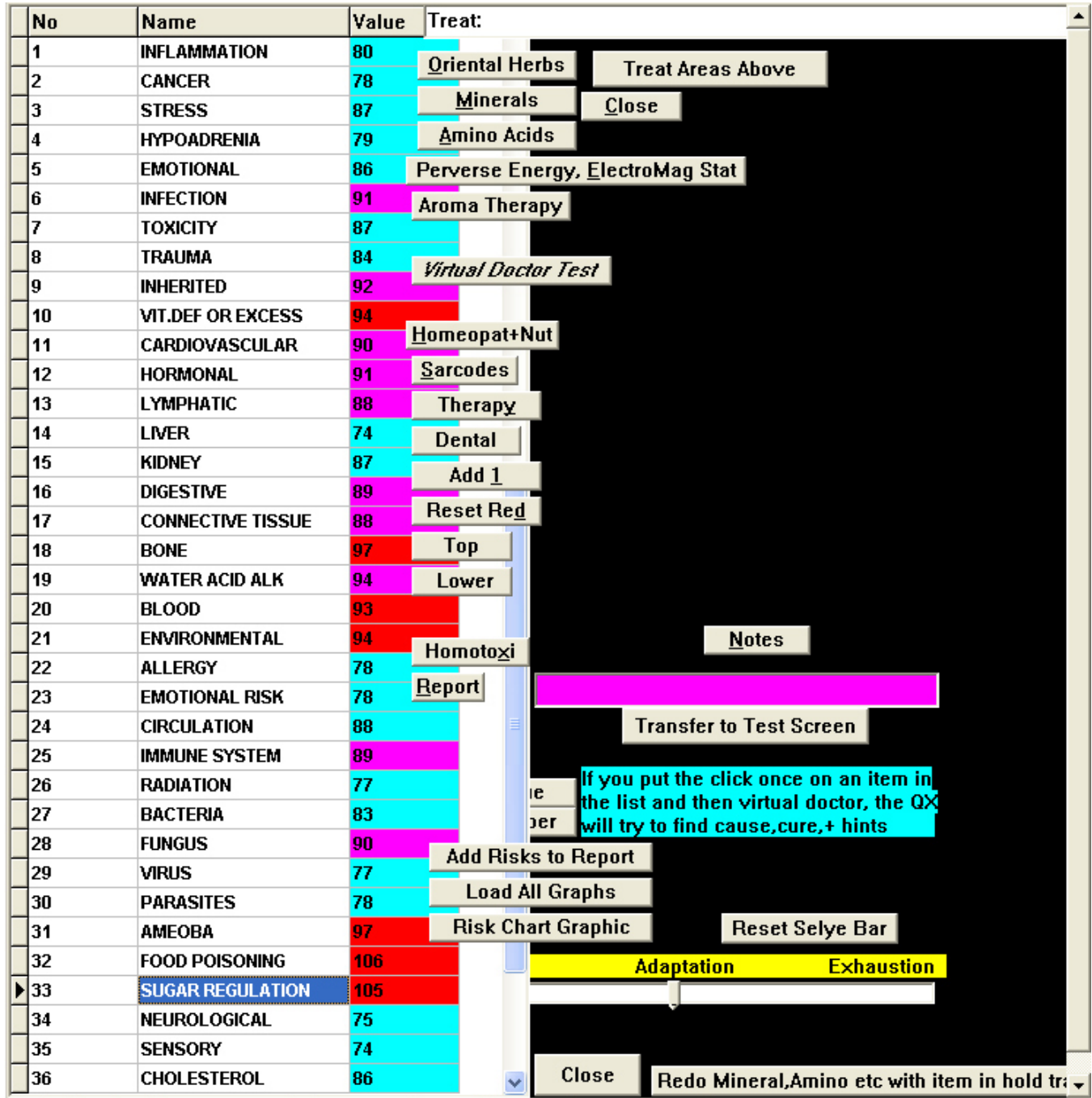
- ◆ **Risks Profile.....105**
- ◆ **Risk Chart.....105**
- ◆ **Virtual Doctor.....105**
- ◆ **Oriental Herbs - Minerals - Amino Acids - Perverse Energy - Aroma Therapy.....106**

CHAPTER 21

RISKS PROFILE

This program will reveal specific items that are at risk in your client. Rebalancing these **Risk** items can also be performed here.

Figure 34 – Risks Profile



Risk Profile

From the Test Screen:

C Programs (top menu bar)

C Risks Profile (drop down list)

C Load Current Patient

C By Value (bottom of screen)

Note high and low items.

C on any **red** item (the following process can be repeated for other **red** items)

Risk Chart

C By Number

C Risk Chart Graphic (opens to a new screen)

C Therapy (top menu bar)

C appropriate therapy (from drop down list)

C Close

Virtual Doctor

C Virtual Doctor Test (gives a new screen indicating primary and secondary causes, suggestions and most possible stressed organ relating to any chosen issue).

C any line for 3 sec. treatment- repeat until rectified is **100**.

C Entangled & Entwined Areas (**purple** panel appears with list of affected items)

C any bar takes you to that **Section**, (such as **Connection to Homotoxicology**) while bringing forward the information in **Virtual Doctor**)

C Close

★ ***Options:***

**Oriental Herbs, Minerals, Amino Acids, Perverse Energy,
Aromatherapy**

Each of these functions are performed in a corresponding manner:

C one of the therapies

Type the organ of concern

C Test Organ for Involvement

C on 1- 5 highest values - (this moves them to the hold tray)

Remove the information in brackets.

C Test and Treat Hold Items repeat until rectified is **85** or above

C Close